



2-POSITION MOMENTARY TOGGLE

For use on Class 2 Circuits Only

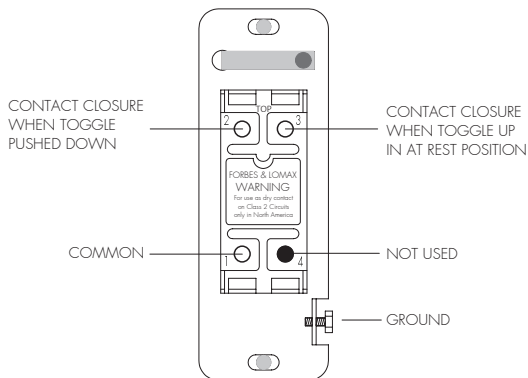
Forbes & Lomax momentary toggles are low voltage momentary dry contact switches, for use in Class 2 circuits only, such as for integrating with home automation systems via contact closure interfaces. The 2-Position momentary toggles can be mounted so the switch levers rest pointing up or down. In the resting position, the switch contacts are 'open' and when the switch is pushed the other way, it closes the contacts to 'make' the circuit. As soon as the switch is let go of, it springs back to the resting position and 'breaks' the circuit. Therefore, the 2-Position momentary toggle provides one contact closure.

WARNINGS AND CAUTIONS

- To be installed and/or used in accordance with appropriate electrical codes and regulations
- For professional use only – should only be installed by a qualified electrician
- Use copper conductors
- Should be wired in the field as a part of a Class 2 circuit only
- Connect to 22-12AWG copper or copper clad wire
- When field-installed conductors are routed with conductors of other circuits, the conductors shall be insulated for the maximum voltage of either circuit

WIRING

2-POSITION MOMENTARY TOGGLE



IMPORTANT NOTICE FOR INSTALLER

To achieve proper aesthetic installation, the wall surface surrounding the wall box opening must be flat and free of irregularities. The wall box must be recessed below the wall surface by 4mm to allow the wallplate to sit completely flush when fitted. Please also refer to the 'Instructions for Electricians & Decorators' leaflet.