



3-POSITION LATCHING TOGGLE For use on Class 2 Circuits Only

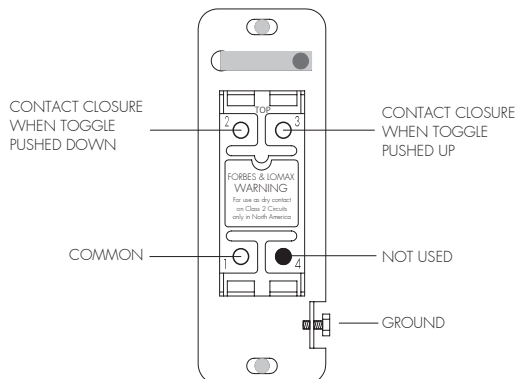
Forbes & Lomax 3-Position latching toggles are low voltage dry contact switches, for use in Class 2 circuits only, such as for integrating with shade systems or home automation systems via contact closure interfaces. The 3-Position latching toggles have a centre position and an up and a down position. In the centre position, the switch contacts are 'open' and when the switch is pushed up, it closes one set of contacts to 'make a circuit' and when the switch is pushed down, it closes another set of contacts to 'make' another circuit. Therefore, the 3-Position latching toggle provides two 'maintained' contact closures. The toggle does not spring back to the centre. If you require a 3-Position toggle that springs back to the centre you would use our 3-Position momentary toggle instead.

WARNINGS AND CAUTIONS

- To be installed and/or used in accordance with appropriate electrical codes and regulations
- For professional use only – should only be installed by a qualified electrician
- Use copper conductors
- Should be wired in the field as a part of a Class 2 circuit only
- Connect to 22-12AWG copper or copper clad wire
- When field-installed conductors are routed with conductors of other circuits, the conductors shall be insulated for the maximum voltage of either circuit

WIRING

3-POSITION LATCHING TOGGLE



IMPORTANT NOTICE FOR INSTALLER

To achieve proper aesthetic installation, the wall surface surrounding the wall box opening must be flat and free of irregularities. The wall box must be recessed below the wall surface by 4mm to allow the wallplate to sit completely flush when fitted. Please also refer to the 'Instructions for Electricians & Decorators' leaflet.