



3-POSITION MOMENTARY TOGGLE For use on Class 2 Circuits Only

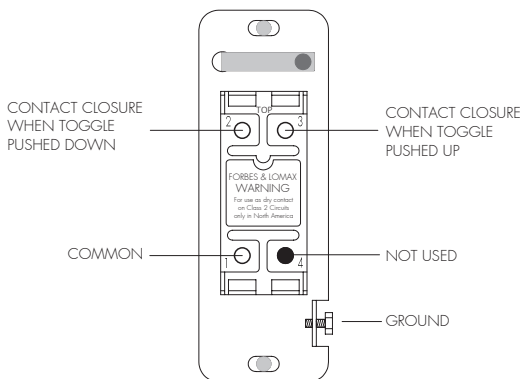
Forbes & Lomax momentary toggles are low voltage momentary dry contact switches, for use in Class 2 circuits only, such as for integrating with home automation systems via contact closure interfaces. The 3-Position momentary toggles rest pointing straight forward at a 90 degree angle to the faceplate. In the resting position, the switch contacts are 'open' and when the switch is pushed up, it closes one set of contacts to 'make' a circuit and when the switch is pushed down, it closes another set of contacts to 'make' another circuit. As soon as the switch is let go of, it springs back to the center resting position and 'breaks' the circuit. Therefore, the 3-Position momentary toggle provides two contact closures.

WARNINGS AND CAUTIONS

- To be installed and/or used in accordance with appropriate electrical codes and regulations
- For professional use only – should only be installed by a qualified electrician
- Use copper conductors
- Should be wired in the field as a part of a Class 2 circuit only
- Connect to 22-12AWG copper or copper clad wire
- When field-installed conductors are routed with conductors of other circuits, the conductors shall be insulated for the maximum voltage of either circuit

WIRING

3-POSITION MOMENTARY TOGGLE



IMPORTANT NOTICE FOR INSTALLER

To achieve proper aesthetic installation, the wall surface surrounding the wall box opening must be flat and free of irregularities. The wall box must be recessed below the wall surface by 4mm to allow the wallplate to sit completely flush when fitted. Please also refer to the 'Instructions for Electricians & Decorators' leaflet.